



Log Boom System

*Our most
cost effective system
for safety, security,
and debris control
applications !*



*Provide a
positive barrier
between your equipment,
hazardous or secure areas,
and the floating debris or
watercraft you want to
keep out !*

Armorfloat™ Log Boom Systems allow the modular construction of unlimited length floating barricades across rivers, lakes, reservoirs, and other waterways. Typical applications include public safety, waterside security, and control of floating logs and debris. Patented Armorfloat™ Barrier Systems incorporate innovative design, premium materials, state-of-the-art manufacturing techniques, and over a decade of development to assure superior long-term performance.

Log Boom System Features

- Stops logs, debris, and watercraft
- Positive boat restraining barrier
- Highly visible line of demarcation
- Superior strength and durability
- Long life marine friendly materials
- Impact, UV, and corrosion resistant
- Unsinkable floatation
- Easily coupled and anchored
- Environmentally safe materials
- Up to one foot of freeboard
- Barrier modules are 16" in diameter, 120" long, and weigh 130 lbs.
- Patented composite construction
- Full length galvanized steel strength and ballast member with integral coupling and attachment points
- Thick wall LLDPE shell, PU closed cell foam core floatation body is permanently molded-on to internal strength member
- Heavy duty galvanized forged steel links and anchor shackles connect modules together
- No bolt-on bare steel components to corrode and fall off

Armorfloat™

Bank-To-Bank Barrier



Stops Logs, Debris, and Watercraft

Highly Visible



Up To One Foot of Freeboard

Superior Strength



Long-Term Durability

Log Boom System Specifications

- **DIMENSIONS:** Each barrier module measures 16" in diameter, 120" long (125"+ assembled length with connectors), and weigh a minimum of 130 lbs.
- **STRENGTH:** Capable of 1500 lbs. concentrated load per square foot, 150 lbs. uniform load per lineal foot, 57,000 lbs. minimum ultimate horizontal load capacity.
- **DRAFT:** Natural draft is about 4" (up to 12" of freeboard), with over 700 lbs. of reserve displacement.
- **CONSTRUCTION:** Patented composite of a seamless polymer floatation body permanently molded on to a full length internal galvanized steel strength member with integral connection and attachment points.
- **FLOATATION BODY:** Molded octagon profile floatation body is 16" in diameter and 106" long. The seamless shell encasement has a .20" nominal wall thickness of environmentally safe polyethylene resin compounded with a long term UV-15 stabilizer additive to deter the effects of sunlight. The internal polyurethane closed cell floatation foam core meets with US Coast Guard guidelines and fills over 95% of the interior void. Floatation body construction is highly puncture resistant, impact resistant, and provides unsinkable reserve displacement. Barrier modules are designed to stack together to facilitate shipping and storage.
- **STRENGTH MEMBER:** System strength and ballast from a one-piece 1" x 2" x 6.8 lbs/ft hot dipped galvanized steel flat bar 120" long with integral coupling and attachment points.
- **CONNECTORS:** Barrier modules are connected together by a 3/4" galvanized forged steel link and two anchor shackles with safety bolt type pins. Connection points have large surface area bronze flange bearings to help isolate wear to the connecting hardware. The assembly is capable of 90° angles and wave action.
- **OPTIONS:** The following options are available.
 - Standard safety orange or alternative custom floatation body color.
 - Stock or custom large font permanent warning graphics.
 - Reflective lenses and stanchion mounted solar marine lights.
 - Galvanized steel welded wire mesh submerged debris screens.
 - Custom system configurations to meet with project requirements.

Full-Length Galvanized Steel Strength Member



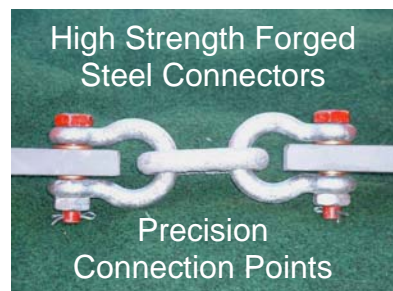
Molded-On Floatation Body



Connector Hardware



High Strength Forged Steel Connectors



Precision Connection Points

Contact us for a quote on your next barrier project!

Phone: (916) 920-8620 Fax: (916) 920-8618

Website: www.armorfloat.com